

TRAFFIC SIGNS

You can't
bike here



You can bike here



Give way to others



One-way street



www.pyoraliiitto.fi
pyoraliiitto@pyoraliiitto.fi
[@pyoraliiitto](https://www.instagram.com/pyoraliiitto)

INSTRUCTIONS FOR BIKING ON THE ROAD

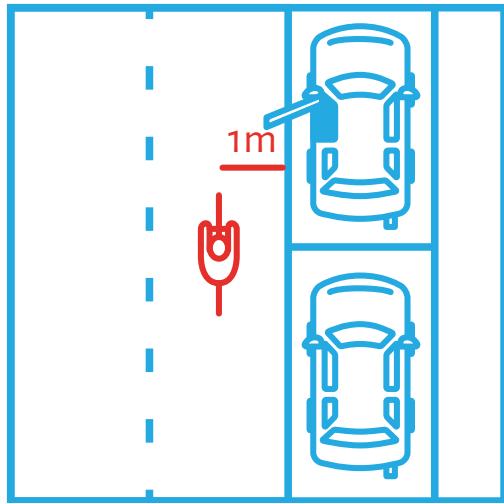


Bicycle paths are not always available in the city. In that case the cyclist's place is in the vehicle lane. It is a more convenient and safer place to bike than on the sidewalk.

Biking on the vehicle lane maybe frightening for some. This guide will help you get started!

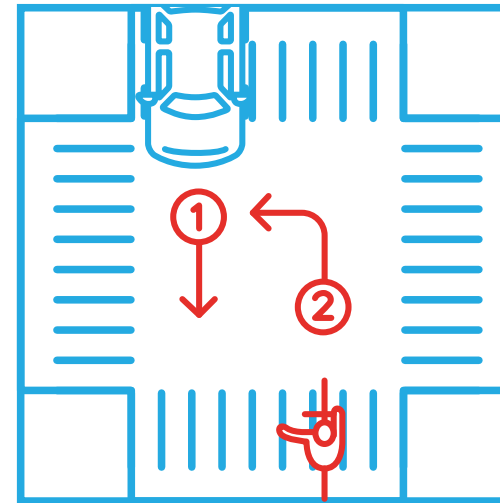


1. TAKE YOUR SPACE



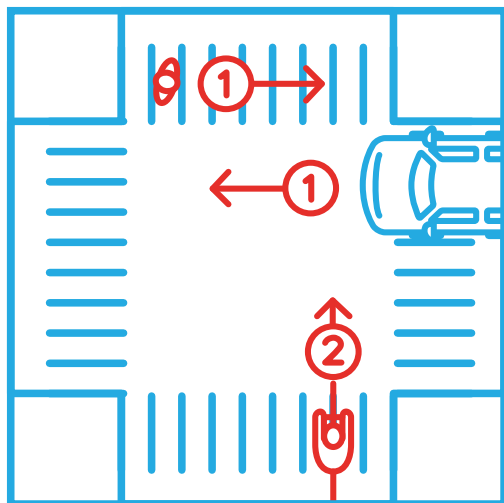
- Keep a sufficient distance between parked cars and other obstacles
- Bike in the same direction as the cars are moving in
- Make it clear to over takers that, space is limited in the same lane
- Let cars overtake only if there is enough space

3. TURNING



- Always use hand signals if you intend on turning
- When turning left, shift into the left side of the lane and give way to oncoming traffic

2. GIVING WAY



- Give way to traffic from the right
- Give way to pedestrians
- Make sure that drivers giving way to you have seen you
- Do not blindly assume that others in traffic know your rights as a biker

GENERAL INSTRUCTIONS

- Be careful of cobblestones, especially if they are wet or frozen
- The driver of a bus, truck or van cannot see in every direction. It is safer to avoid overtaking them
- Be careful when merging into or from the bike lane
- Be careful of tram rails